

Specifications:

LENGTH	WIDTH	HEIGHT	WHEEL BASE	DRIVE SYSTEM	DIAMETER OF WHEEL	WIDTH OF WHEEL	Gear Ratio	SERVO
215mm	102mm	115mm	120mm	4WD Shaft Drive	24.8mm	18.2mm	1:62	1kg

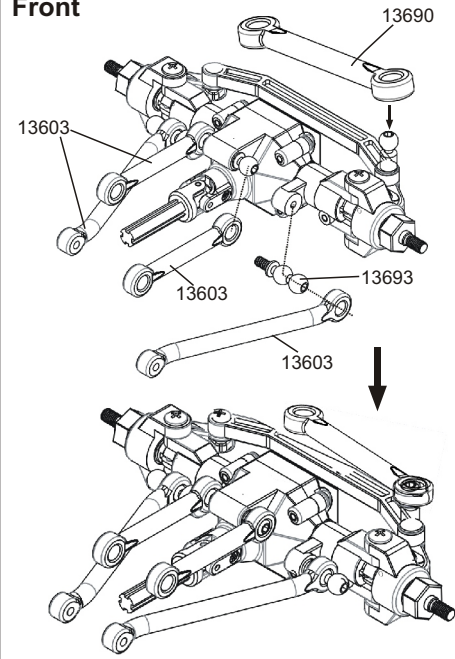
Spare Part

13604-Shock Mount Set	13605-Front/Rear Axle Housing Set	13606-Front & Rear Bumper Set	13686-Transmission Gear Case	13608- 64T Main Gear & 12T Pinion Gear Set
13685- Transmission Gear Set	13620-Pinion & Ring Gear	13687 - Tap Central Gear Box	13691- Transmission Drive Shaft Set	13690 - Servo Link / Tap Shaft
13619- Telescopic Main Drive Shaft Set	13688 - Servo Mount	13689 - Tap Joint Cap	13617-Front & Rear Hub Set	13618- Main Chassis Set
13603- Vehicle Link Set	13602- Shock Set	13613-Wheel set	13616- Swamper TireSet	13612- Swamper Tire & Wheel set
13627-Wheel Hex with Pin	13622N- 1KG Servo	13623N- ESC with RX Built In	13638- 500mah 3.7V Lipo Battery	13630- USB Charger with Indicator

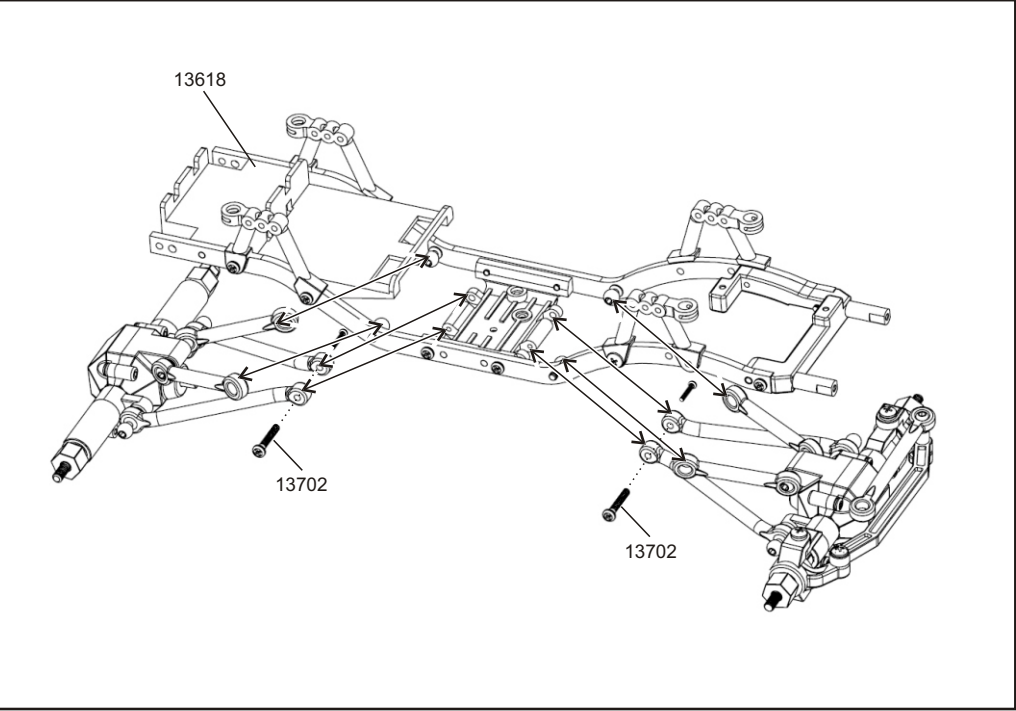
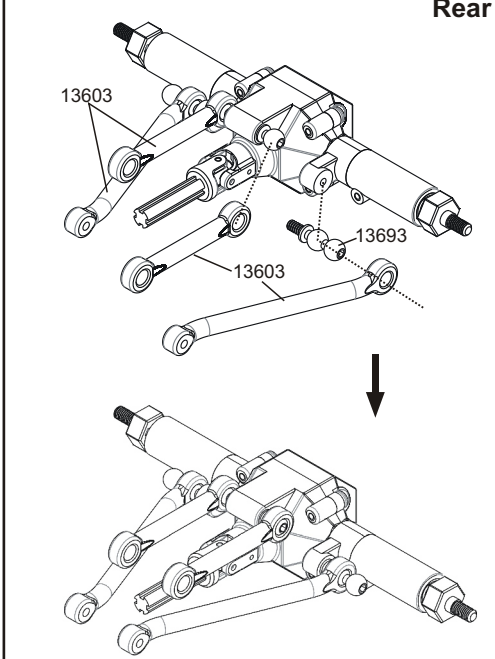
Spare Part

13625- 050 High Power Brushed Motor	13601- Front & Rear Drive shaft with main gear Included	13716 - Pin 1X5	13717 - Pin 1X6	13715 - Set Screw2X3
13692 - Central Link Ball Head	13693 - Side Link Ball Head	13694 - Steering Link Ball Head	13695 - Servo Ball Head	13696 - Copper Bushing 8x4x3
13697 - Copper Bushing 6x3x2.5	13698 - Copper Bushing 5x2x2.5	24630-Body R-Clip	13699 - Nut M2.5	13701 - Nut M2
13702 - Round Head Self-tapping Screw 1.7x10	13703 - Flat Head Self-tapping Screw 1.7x6	13704 - Round Head Self-tapping Screw 1.7x7	13705 - Round Head Self-tapping Screw 1.7x5	13706 - Round Head Self-tapping Screw 1.4x6
13707 - Button Head Metric Hex Screw 2x4	13708 - Button Head Metric Hex Screw 2X6	13709 - Round Head Self-tapping Screw 2X6	13710 - Button Head Metric Hex Screw 2X8	13711 - RoundHead Self-tapping Screw2X8
13712 - Button Head Metric Hex Screw 2x5	13713 - Flat Head Self-tapping Screw 1.7x4	13714 - Body Roll Cage	PVC Body 13684-4 (Red) 13684-5 (Metal Gray)	Transparent Body 13684-0 PC Lexan
PVC Pick UP Body 13624-(- Red) 13624-1 (Mustard)	13626-LED Light Set 1	13640 -LED Light Set 2	13718 -Rubber band+ Double-stick tape	

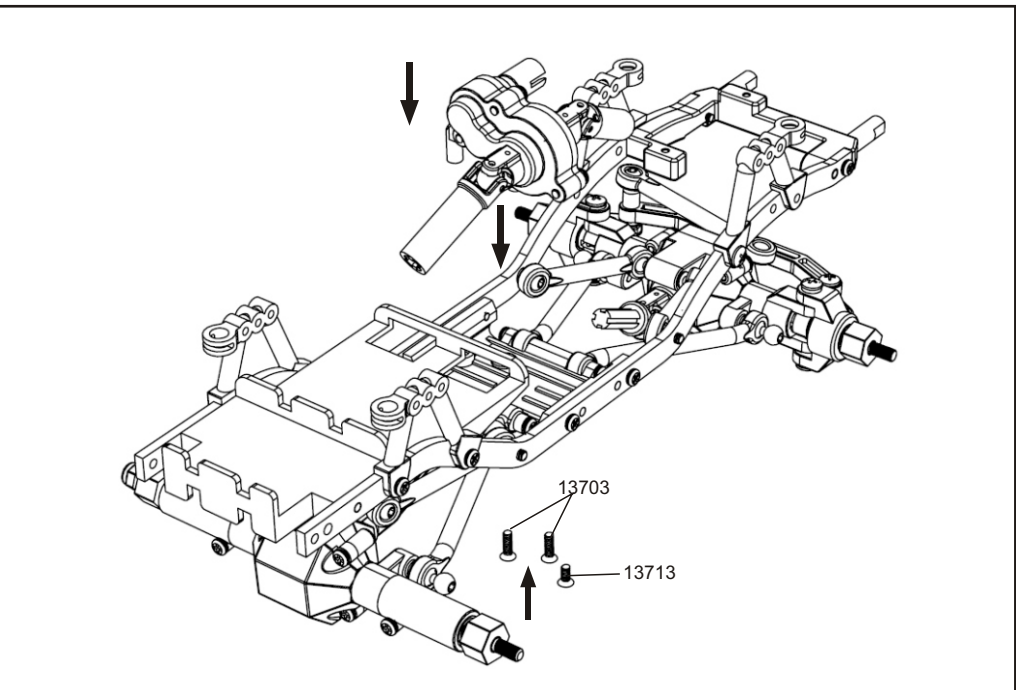
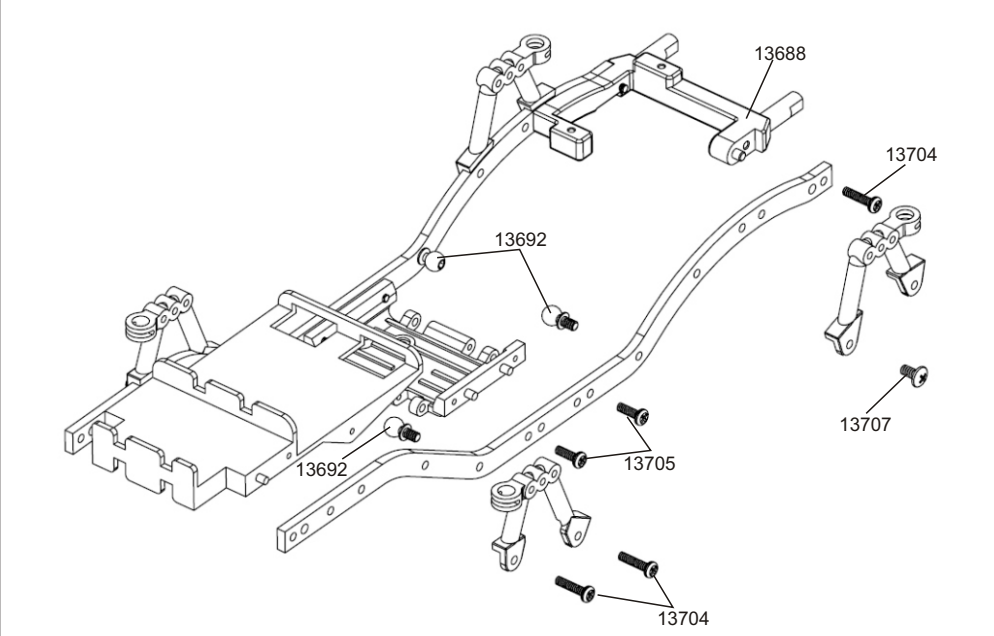
Front



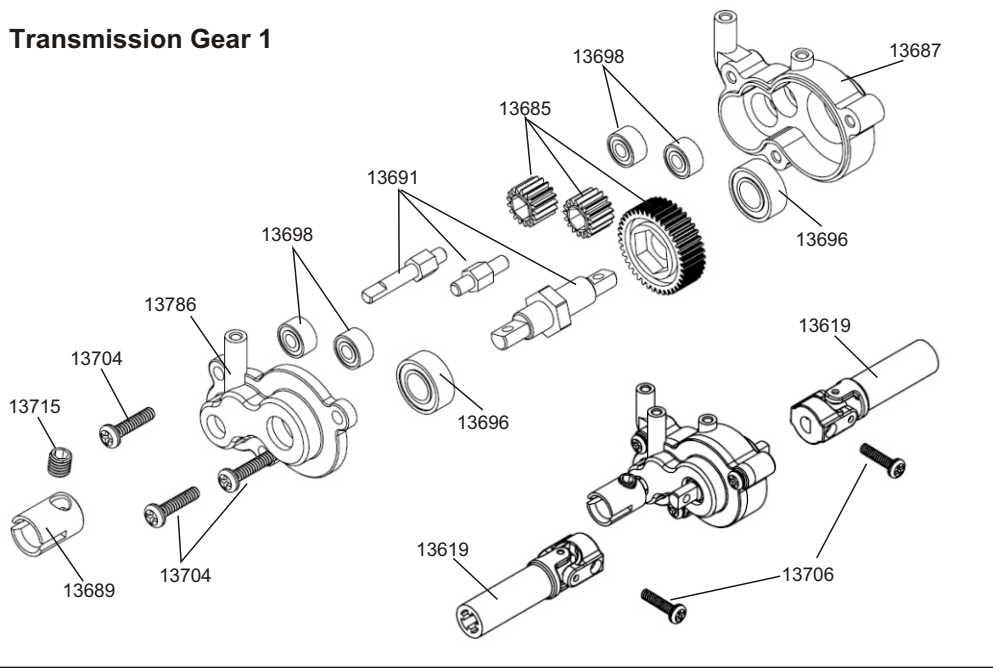
Rear



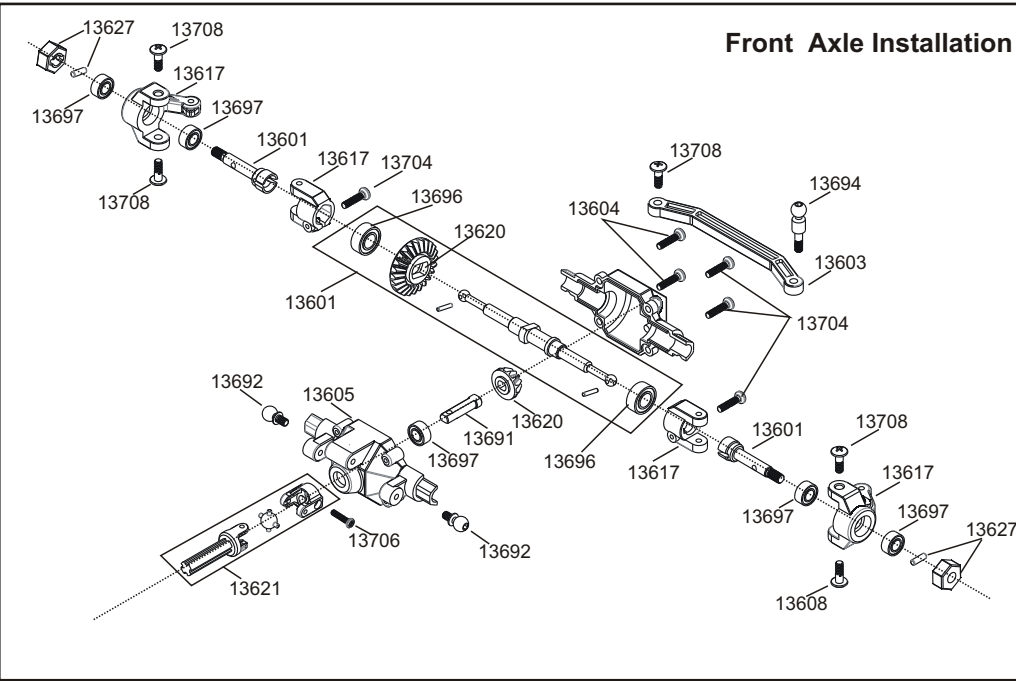
Main Chassis Installation (13618)



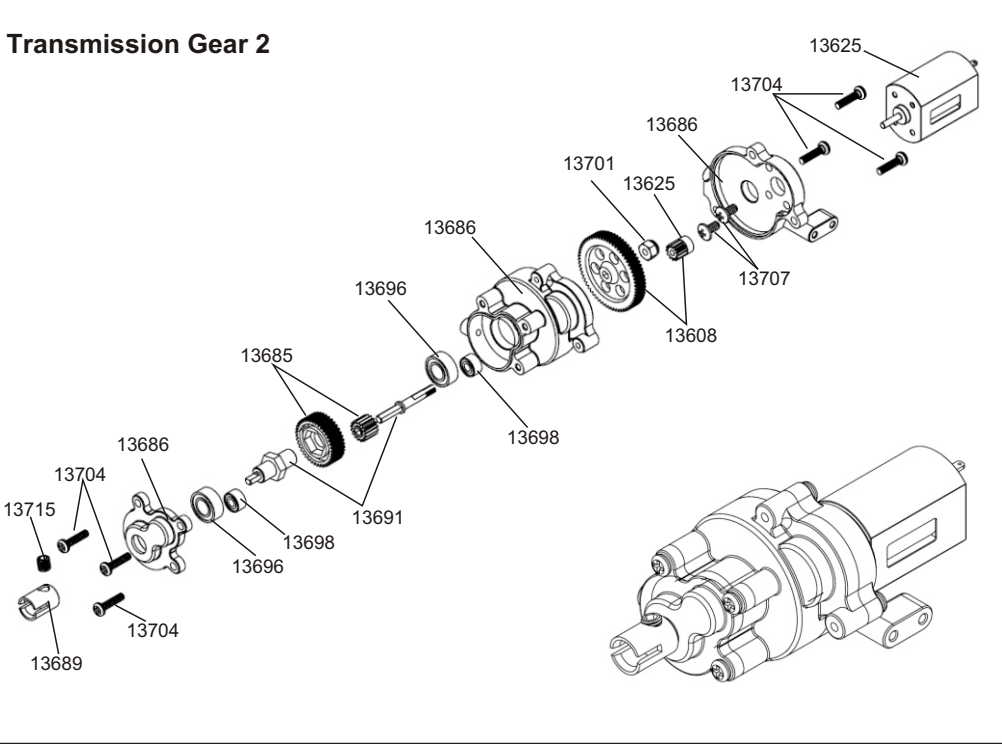
Transmission Gear 1



Front Axle Installation



Transmission Gear 2



Rear Axle Installation

